



NORDANA MONIKA AND NORDANA FREJA

General information

Builder: Mitsubishi Shimonoseki, Japan
 Vessels: Nordana Monika - build 1993
 Nordana Freja - build 1992
 Flag: Malta
 Homeport: Valetta
 Class: GL 100 A1, Multi Purpose Cargo Vessel, strengthened for heavy cargo.
 Type: Heavy Lift Multi Purpose Dry Cargo Vessel, strengthened for heavy cargoes, equipped for the carriage of containers.
 Tweendecks can be used as bulkheads in holds.
 IMO / Aussie / ITF fitted.

Engines

Main Engine: Hanshin 6LF58, 6000 BHP - 180 RPM

Dimensions

LOA: 113,12 m
 LBP: 106,00 m
 Beam: 18,90 m
 Scantling draught: 8,54 m

Tonnage

DWAT: 9742 mt
 GR/NT: 5988 / 3602 mt

Speed & Consumption

About 14 knots on about 16 mt IFO 380 CST
 Port consumption idle: 1 mt MGO
 Port consumption with gear working: 2 mt MGO

Container capacities

Hold: 234 TEU
 On deck: 266 TEU
 Total: 500
 - including 76 reefer containers

Cranes

Two cranes, each 50 mt SWL, combinable up to 100 mt lift.
 Lifting capacity (SWL):
 50,00 mt - outreach: 18,00 m
 40,00 mt - outreach: 24,00 m

Holds / hatch

1 hold - dimensions:
 Lower hold: 73,50 m x 15,70 m
 Tweendeck: 75,20 m x 18,40 m
 2 hatches - dimensions:
 Hatch 1: 33,60 m x 15,70 m
 Hatch 2: 35,70 m x 15,70 m

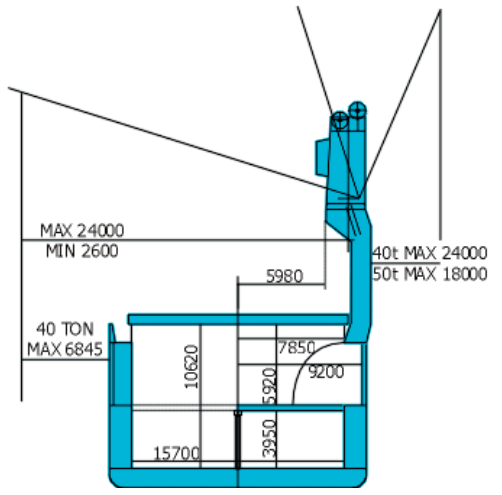
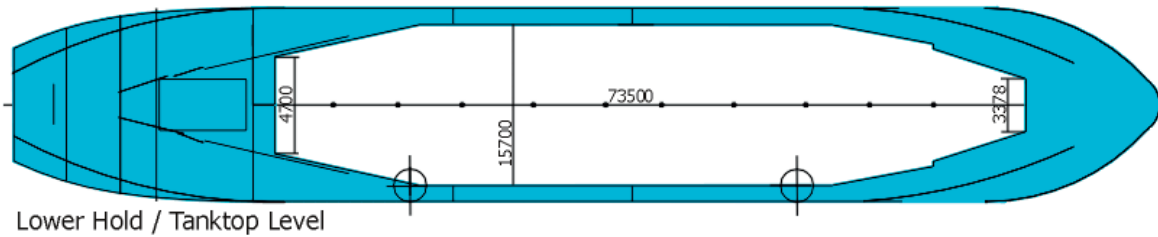
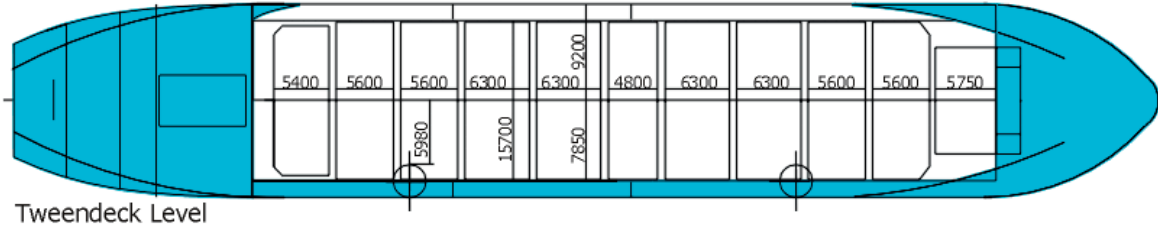
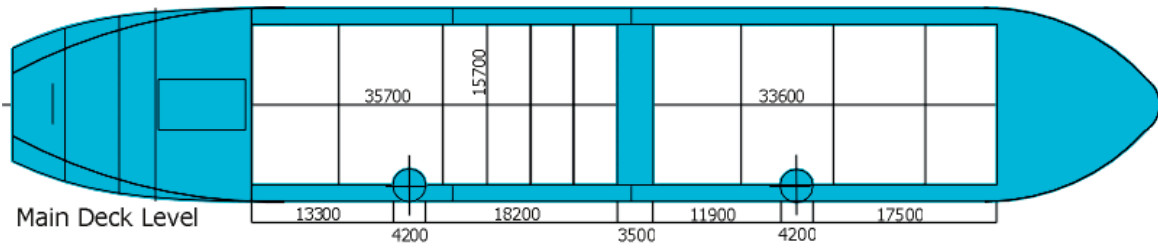
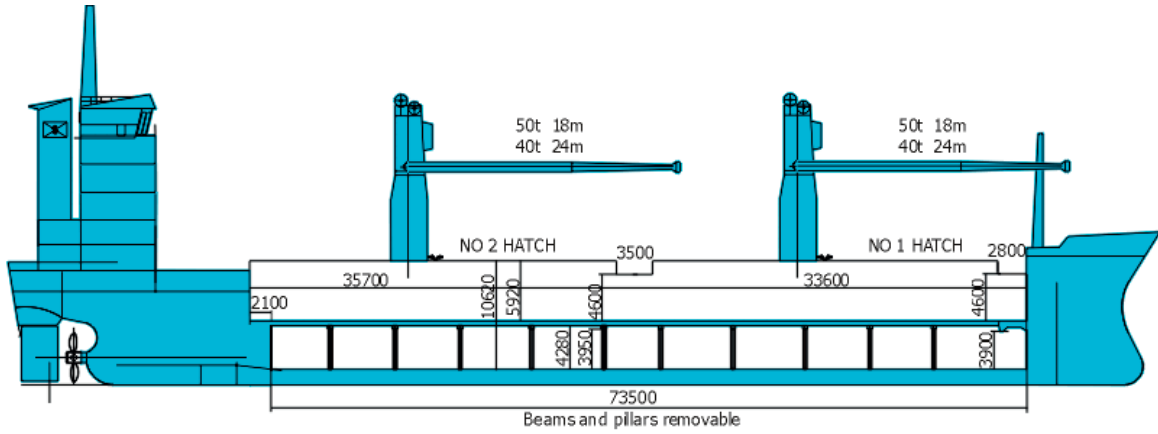
Tweendeck heights

Tanktop to underside of tweendeck: 4,10 m
 Tweendeck to underside of hatchcovers: 5,92 m

Load distribution

Tanktop: 20,00 mt/sqm
 Tweendeck: 3,70 mt/sqm
 Hatchcovers: 1,75 mt/sqm

(continue)



All details believed to be correct, but not guaranteed.