



NORDANA SOPHIE AND NORDANA ANDREA

General information

Builder: Higaki Shipbuilding Co, Japan
 Nordana Sophie: 06/1999
 Nordana Andrea: 01/2000
 Flag: Thailand
 Homeport: Bangkok
 Class: Nippon Kaiji Kyokai
 Type: Tweendeck Type General
 Cargo Vessel

Engines

Main engine: Kawasaki - Man B&W type
 6L 35MC and turbo charger type 42 SD

Dimensions

LOA: 114,10 m
 Beam: 19,60 m
 Draught: 7,40 m

Tonnage

DWAT: 8976,45 mt
 GR/NT: 7659/2886 mt

Speed & consumption

Abt 13,50 knots on abt 15 mt IFO 180 cst + 0,8
 mt MGO
 Port consumption idle: 1 mt MGO
 Port consumption with gear working: 2 mt MGO

Cranes

Two twin type deck cranes, each able to lift 25 mt
 - 50 mt in tandem.
 One electro hydraulic derrick, able to lift 25 mt.

Tweendeck heights

Tanktop to tweendeck: 6,70 m
 Tweendeck to hatchcovers: 5,20 m

Holds / hatches

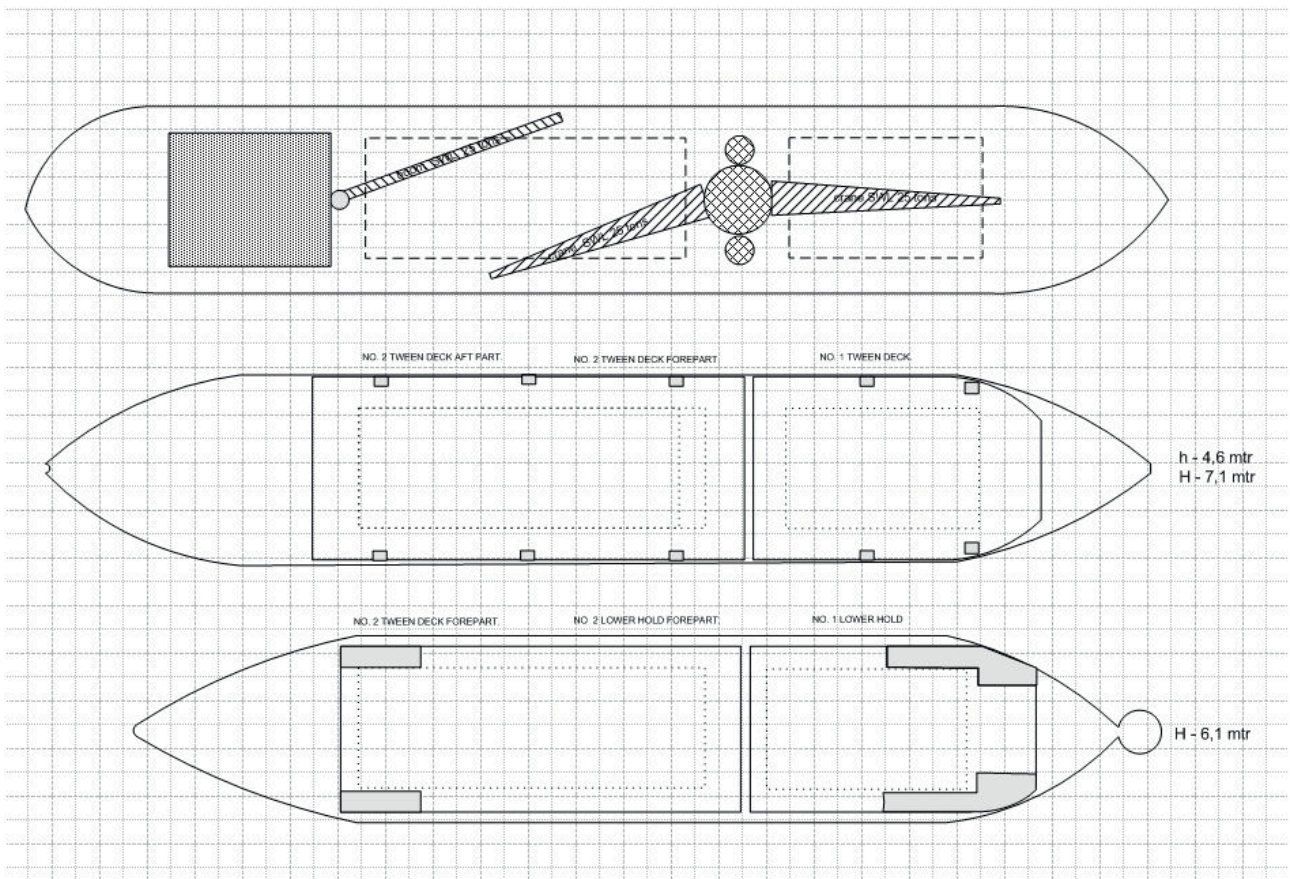
2 holds - dims:
 Tanktop - hold 1: 30,00 x 17,40 m
 Tanktop - hold 2: 42,00 x 17,40 m
 Tweendeck - hold 1: 30,20 x 19,10 m
 Tweendeck - hold 2: 45,40 x 19,10 m
 2 hatches - dims:
 Hatch 1: 20,30 x 12,60 m
 Hatch 2: 33,60 x 12,60 m

Cargo capacity: 16.605 cbm grain / 15.294 cbm
 bale

Load distribution:

Tanktop: 10,89 mt/sqm
 Tweendeck: 1,75 mt/sqm
 Hatch cover: 3,90 mt/sqm

(continue)



All details believed to be correct, but not guaranteed.